



PERFORMANCE BULLETIN

Engine: Yamaha F300UCA / LF300UCA

Boat: Nautic Star® 32XS

Configuration: Twin

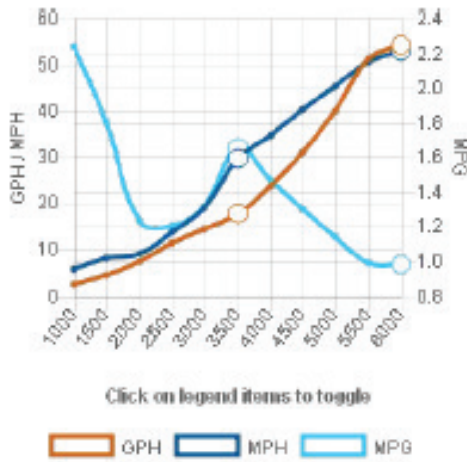
Test Date: 28-Mar-2019



PERFORMANCE DATA

RPM	MPH	GPH	MPG
1000	5.7	2.6	2.24
1500	8.3	4.6	1.81
2000	9.3	7.6	1.23
2500	13.8	11.5	1.20
3000	19.0	14.4	1.32
3500	29.6	17.8	1.66
4000	34.8	23.7	1.47
4500	40.3	31.0	1.30
5000	45.4	39.9	1.14
5500	50.8	51.5	0.99
6000	53.0	54.4	0.98

0-30 MPH: 7.3 seconds



NAUTIC STAR 32XS

Length	32' 0"
Beam	10' 6"
Dry Weight (Boat Mfr. Pub)	8,450 lbs
Maximum HP	850 hp
Fuel Capacity	307 gal
Weight as Tested	11,655 lbs

F300UCA / LF300UCA

Horsepower	300 hp
Induction	EFI/VCT/DOHC
Displacement	4.2 L
Weight (Estimated)	575 lbs
Gear Ratio	1.75:1

ENGINE MOUNTING HEIGHT

Mounting Hole Position	#2
Ventilation Plate Height	1" Above Boat Bottom

PROPELLER(S)

Series	Saltwater Series II™
Diameter x Pitch	15-1/4 x 19
Yamaha Part #	6CE-45970-20-00 / 6CF-45970-20-00
Propeller Material	Polished Stainless Steel

TEST CONDITIONS

Number of People	3
Air / Water Temperature (Fahrenheit)	46° F / 49° F
Elevation (in feet above sea level)	0'
Wind Velocity	0-10 MPH

COMMENTS

Test weight includes 175 gallons of fuel, 1 group 24 battery, 2 group 27s batteries, safety and test gear.

YPB#: PB_NST_32XS_TW_F300_3-28-19_OCC

NOTICE TO CONSUMER

The information and data contained in this Performance Bulletin is approximate and subject to many different factors and variables. It is provided as a guideline only and should not be relied upon as representative of actual performance. Your boat's performance may be different than the information contained in this Performance Bulletin due to various factors, including your boat's actual weight, wind and water conditions, temperature, humidity, elevation, bottom paint, boat options affecting wind/water drag and/or boat weight, and operator ability. Please confirm the specifications and performance data on your specific boat/engine combination with your dealer prior to purchase. Please also keep in mind that the data contained in this Performance Bulletin may or may not have been performed using Yamaha PowerMatched components. Yamaha reserves the right to change the specifications and performance data of this Performance Bulletin or engine without notice. This document contains many of Yamaha's valuable trademarks. It may also contain trademarks belonging to other companies. Any references to other companies or their products are for identification purposes only, and are not intended to be an endorsement.

Boat Manufactured By:
NauticStar Boats
P.O. Box 26 • Amory, MS 38821
(662) 256-5636
NauticstarBoats.com

